



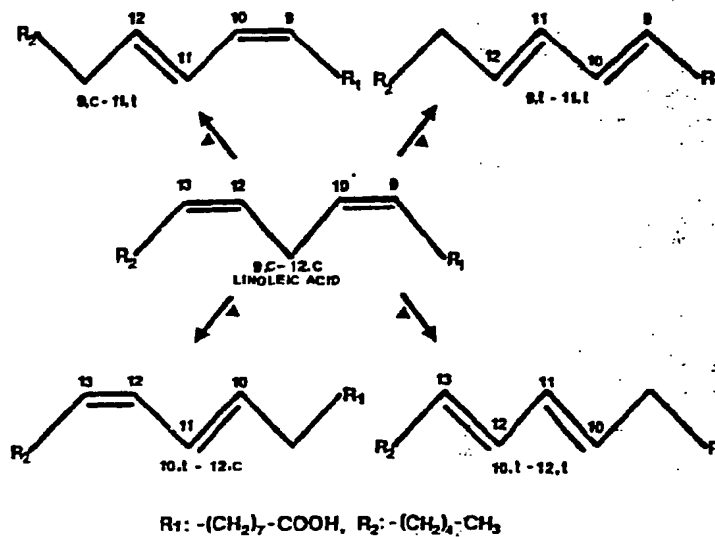
PCT

WORLD INTELLECTUAL PROPERTY ORGANIZATION
International Bureau

INTERNATIONAL APPLICATION PUBLISHED UNDER THE PATENT COOPERATION TREATY (PCT)

<p>(51) International Patent Classification 5 : A23L 3/3508, 3/3517</p>	<p>A1</p>	<p>(11) International Publication Number: WO 90/09110 (43) International Publication Date: 23 August 1990 (23.08.90)</p>
<p>(21) International Application Number: PCT/US90/00630 (22) International Filing Date: 2 February 1990 (02.02.90) (30) Priority data: 313,120 17 February 1989 (17.02.89) US (71) Applicant: WISCONSIN ALUMNI RESEARCH FOUNDATION [US/US]; P.O. Box 7365, Madison, WI 53707-7365 (US). (72) Inventors: PARIZA, Michael, W. ; 6913 Pilgrim Road, Madison, WI 53711 (US). HA, Yeong, L. ; 940E Eagle Heights, Madison, WI 53705 (US). (74) Agent: KRYSHAK, Thad, F.; Quarles & Brady, 411 East Wisconsin Avenue, Milwaukee, WI 53202 (US).</p>		<p>(81) Designated States: AT (European patent), AU, BE (European patent), BG, CH (European patent), DE (European patent), DK (European patent), ES (European patent), FI, FR (European patent), GB (European patent), HU, IT (European patent), JP, LU (European patent), NL (European patent), NO, RO, SE, SE (European patent), SU. Published <i>With international search report.</i></p>

(54) Title: METHODS OF PRESERVING PRODUCTS AND NOVEL COMPOSITIONS THEREFOR



(57) Abstract

A method of preserving a product by preventing oxidation, quenching singlet oxygen and/or inhibiting mold growth comprises adding to the product an effective amount of an active form of CLA. Active forms of CLA include 9,11-octadecadienoic acid, 10,12-octadecadienoic acid, active isomers thereof; non-toxic salts thereof; active esters; other active chemical derivatives thereof, and mixtures thereof. A simple method of making the CLA is also disclosed.

UNIQUEMENT A TITRE D'INFORMATION

Codes utilisés pour identifier les Etats parties au PCT, sur les pages de couverture des brochures publiant des demandes internationales en vertu du PCT.

AT	Autriche	ES	Espagne	MG	Madagascar
AU	Australie	FI	Finlande	ML	Mali
BB	Barbade	FR	France	MR	Mauritanie
BE	Belgique	GA	Gabon	MW	Malawi
BF	Burkina Faso	GB	Royaume-Uni	NL	Pays-Bas
BG	Bulgarie	HU	Hongrie	NO	Norvège
BJ	Bénin	IT	Italie	RO	Roumanie
BR	Brazil	JP	Japon	SD	Soudan
CA	Canada	KP	République populaire démocratique de Corée	SE	Suède
CF	République Centrafricaine	KR	République de Corée	SN	Sénégal
CG	Congo	LI	Liechtenstein	SU	Union soviétique
CH	Suisse	LK	Sri Lanka	TD	Tchad
CM	Cameroun	LU	Luxembourg	TG	Togo
DE	Allemagne, République Fédérale d'	MC	Monaco	US	Etats-Unis d'Amérique
DK	Danemark				

METHODS OF PRESERVING PRODUCTS
AND NOVEL COMPOSITIONS THEREFOR

The present invention relates generally to methods
and compositions for preserving products by preventing
5 oxidation, quenching singlet oxygen and inhibiting mold
growth, and, more particularly to methods and composi-
tions which can be used in natural food products.

Among the preservative antioxidants most widely used
in food products are the compounds butylated
10 hydroxyanisole (BHA) and butylated hydroxytoluene
(BHT). BHT is also used as an antioxidant in animal
feeds, petrol products, synthetic rubbers, plastics,
animal and vegetable oils and soaps.

Both BHA and BHT are relatively non-toxic; however,
15 they are not naturally occurring compounds and cannot be
used in true "natural" foods.

Among the preservative compounds most widely used to
prevent yeast and mold growth are sorbic acid and its
potassium salt. These compounds are relatively non-toxic
20 but they too are not naturally occurring and cannot be
used in true "natural" foods.

There is a need for safe and effective methods of
preserving products by preventing oxidation, as well as,
a natural, safe and effective method of preventing mold
25 growth. There also is a need for safe and effective
compositions for use in such methods.

The primary objects of the present inventions are to
disclose natural, safe and effective methods of
preserving products by inhibiting oxidation, quenching
30 singlet oxygen and inhibiting mold growth.

Further objects are to disclose novel compositions for use in those methods and a simple, inexpensive method of preparing such compositions.

5 The methods of the present invention may take several embodiments. In one embodiment, the antioxidant, singlet oxygen quenching and mold growth inhibiting preservative is added to the product. And, in a second embodiment, the antioxidant, singlet oxygen quenching, and mold growth inhibiting preservative is formed in situ in the product.

10 The preservative compositions of the present invention are those containing the free conjugated linoleic acids (CLA) 9,11-octadecadienoic acid and 10,12-octadecadienoic acid. Active forms of CLA also include compositions containing the active isomers of CLA; non-
15 toxic salts thereof; active esters and other active chemical derivatives thereof; and mixtures thereof. The discovery that these compositions are antioxidants and that they quench singlet oxygen and that they inhibit mold growth was completely unexpected and could not have
20 been predicted from current chemical theory.

The free acid forms of the compositions of the present invention are preferably prepared by reacting linoleic acid with a protein, such as whey protein, which is capable of effecting the transformation of linoleic
25 acid to the desired compositions at temperatures up to about 85°C. The non-toxic salts of the free acids may be made by reacting the free acids with a non-toxic base.

Triglyceride esters may be prepared by reacting a triglyceride containing linoleic acid, such as corn oil,
30 with a protein capable of effecting the transformation of linoleic acid to the active material, such as whey protein. Similar methods can be used to prepare other esters, such as methyl or ethyl esters.

The antioxidant and mold growth inhibiting compounds
35 of the present invention are not all new compounds. The free conjugated linoleic acids (CLA) have been previously isolated from fried meats and described as anticarcino

gens by Y. L. Ha, N. K. Grimm and M. W. Pariza, in Carcinogenesis Vol. 8, No. 12, pp. 1881-1887 (1987). Since then, they have been found in some processed cheese products. Y.L. Ha, N. K. Grimm and M. W. Pariza, in
5 J. Agric. Food Chem., Vol. 37, No. 1, pp. 75-81. (1987). However, the non-toxic salts of the CLA, such as the sodium and potassium salts, are believed to be novel compounds.

In the drawings:

10 Fig. 1 shows a model for the formation of CLA from linoleic acid;

Fig. 2 shows the effect of storage at 25°C on CLA content produced by combining a linoleic acid source (butter fat) and whey protein;

15 Fig. 3 shows the inhibiting effect of CLA on linoleic acid oxidation as compared to other antioxidants; and,

Fig. 4 shows CLA as a singlet oxygen quenching agent.

20 In the preferred methods of the present invention, a safe and effective amount of one or more of the preservative compositions of the present invention are either added to a product or generated in situ in the product by the reaction of linoleic acid and a protein capable of
25 effecting the transformation of linoleic acid to the active material, such as whey protein.

A form of CLA suitable for use in natural foods is preferably prepared by reacting roughly equivalent
30 amounts of a natural source containing linoleic acid, such as butter fat, with milk whey protein at ambient temperatures. The reaction proceeds quickly even when the ingredients are simply intimately mixed. Fig. 1 shows a model for the formation of CLA from linoleic acid.

35 The CLA obtained by the practice of the preferred method of preparation contains one or more of the 9,11-octadecadienoic acids and/or 10,12-octadecadienoic acids

and active isomers thereof. It may be free or bound chemically through ester linkages. CLA which is heat stable can be used as is, or dried and powdered in salt form. CLA is readily converted into a non-toxic salt, such as the sodium or potassium salt, by reacting chemically equivalent amounts of the free acid with an alkali hydroxide at a pH of about 8 to 9.

CLA and its active non-toxic derivatives, such as the non-toxic salts, can be added to products to inhibit oxidation mediated by free radicals or by singlet oxygen in amounts roughly equivalent to the amounts of BHA or BHT, that are now being used. The exact amount to be added, of course, depends upon the form of CLA employed, the nature of the product, the packaging, and the conditions of storage and use. Generally, the amount employed with CLA and its non-toxic salts will range from about one part per million (ppm) to about 1,000 ppm of product. Like BHA and BHT, the CLA is oil soluble. In contrast to BHA and BHT, CLA is a naturally derived normal constituent of the human diet (including human breast milk).

When used for its mold growth inhibiting properties, CLA or its active derivatives are added to the product to be protected in safe and effective amounts. The exact amount to be added will, of course, depend upon the nature of the product, the packaging and the conditions of storage and use. Generally, the amount employed with CLA and its non-toxic salts will range from about 1,000 ppm to about 10,000 ppm per gram of product. CLA and its non-toxic salts appear to be as effective as sorbic acid or potassium sorbate at similar concentrations.

The exact mechanisms by which the CLA acts as an antioxidant or to quench singlet oxygen are not known. However, it is believed to somehow tie up and defuse free radicals and singlet oxygen. A possible mechanism of action for CLA as an antioxidant is based on the report of Osawa and Namiki (Agric. Biol. Chem. 45: 735-739,

1981). In that report a novel diketone with antioxidant activity was isolated from Eucalyptus leaves and was determined chemically to be n-tritriacontan-16, 18-dione. It is proposed that a similar novel diketone
5 with antioxidant activity may form when CLA is exposed to oxygen. The diketone would result from the reaction of molecular oxygen and activated oxygen species with the conjugated double bond system of CLA. The mechanism by which it inhibits mold growth is not known.

10 While any source of linoleic acid can be used to prepare CLA, the highest yields are obtained when a source rich in linoleic acid, such as corn oil or safflower oil, are used.

The preferred protein which is used to transform
15 linoleic acid to an active form of CLA is whey protein which contains sulfhydryl groups and is, of course, readily available. Other proteins that will transform linoleic acid to CLA can be readily determined without undue experimentation by those skilled in the art. Among
20 such proteins would be those that contain sulfhydryl groups, as well as, non-sulfhydryl containing proteins.

The following examples illustrate the preparation of the CLA by the method of the invention, and the use of CLA to prevent the oxidation of linoleic acid.

25

Example 1

PREPARATION OF CLA

Forty grams of whey protein and forty five grams of a fat source containing linoleic acid (butter fat) were intimately mixed at ambient temperature and then
30 pasteurized at 85°C for 5 minutes. After 30 minutes the mixture was assayed for CLA as previously described. The CLA thus formed was stable at 25°C for up to 8 weeks (See Fig. 2).

Example 2

PREPARATION OF POTASSIUM SALT

The potassium salt of CLA was prepared by adding about 50 g. of CLA to 100 ml of water, adjusting to pH 8.5 with 1N KOH, and freeze drying. The resulting product was a white powder.

Example 3

PREPARATION OF SODIUM SALT

The sodium salt of CLA was prepared by adding about 50 g. of CLA to 100 ml of water, adjusting to pH 8.5 with 1N NaOH, and freeze drying. The resulting product was a white powder.

Example 4

PREVENTION OF OXIDATION

0.1 mg of CLA prepared by alkali-isomerization of linoleic acid was added to 100 mg of linoleic acid in a reaction medium containing 10 ml of phosphate buffer (pH 8.0, 0.2M); 10.5 ml ethanol and 4.5 ml water. The resulting composition was incubated at 40°C for up to 15 days. The peroxide produced was measured by the thiocyanate method in which peroxide oxidizes Fe⁺⁺ to Fe⁺⁺⁺ in the presence of cyanate to give a color exhibiting maximum absorption at 480 nm. The results obtained were equivalent to those obtained with similar amounts of BHA and better than other antioxidants (See Fig. 3).

Example 5

INHIBITION OF MOLD GROWTH

The addition of 1% potassium CLA to YM agar medium inhibited mold growth better than 1% potassium sorbate in the same medium under the same conditions.

Example 6

SINGLET OXYGEN QUENCHING

The reaction medium contained (per 5 ml of acetonitrile solvent):

- 5 Linoleic Acid (LA): LA (0.007M) + rose bengal
(0.5×10^{-4} M).
- CLA : CLA (0.007M) + rose bengal (0.5×10^{-4} M).
- LA + CLA: LA (0.007M) + CLA (0.007M) + rose bengal
(0.5×10^{-4} M).

- 10 The sample was illuminated by a tungsten lamp (60 w, 13
cm distance) for various times. The peroxide produced
was measured by iodometric method (peroxide oxidize
iodine anion (I^{-1}) to iodate (I_2) to give yellow color
exhibiting max absorption at 350 nm. The results are
15 shown in Fig. 4.

- Preparation of CLA isomer standards. The methyl ester of
t10,c12-octadecadienoate was prepared by crystallization
from methyl esters of alkali-isomerized linoleic acid.
Methyl t10,t12- and c10,c12-octadecadienoate were pre-
20 pared from the t10,c12-isomer by iodine and light
isomerization. The prepared 10,12-isomers were purified
by the normal-phase semi-preparatory HPLC as described
below in the HPLC section. A typical semi-preparatory
normal-phase HPLC profile of the methyl t10,c12-
25 octadecadienoate prepared exhibited 3 components (peaks
1, 40.1 min; 2, 47.5 min; and 3, 65.1 min), which were
present in relative proportions of 89, 2 and 9%, respec-
tively. Subsequent capillary GC analyses, using
conditions described in the GC section, of these peaks
30 revealed that peak 1 is a methyl t10,c12-isomer of
greater than 95% purity, while peaks 2 and 3 are unknown
impurities. The remaining 10,12-geometrical CLA
standards were similarly purified by this HPLC procedure.

The 9,11-octadecadienoic acid isomers (c,c; c,t; and t,t) were prepared from ricinoleic acid or ricinelaiddic acid, and the individual isomers were separated by the argentation HPLC method.

5 Preparation of free CLA. This procedure includes
extraction and saponification of CLA. Sample material (1
g) containing 1.0 mg PBA (internal standard) was
homogenized with 20 ml of 2:1 chloroform:methanol (v/v)
for 60 sec in a Polytron homogenizer (Brinkman
10 instruments, Westbury, NY) at medium speed. Another 10
ml of the chloroform:methanol mixture was used to rinse
the Polytron probe and combined with the homogenate,
followed by addition of 10 ml double distilled water.
For milk, 5 g sample, 5.0 mg PBA and 150 ml of chloro-
15 form:methanol mixture were used. The homogenate was
centrifuged at 2,000 rpm for 30 min (4°C). The organic
layer was separated, dried over Na₂SO₄ anhydrous, and
rotoevaporated. Total fat content was determined from
the residue. Free fatty acids were prepared by heating
20 the fat extracts in 2 ml of 1.0 N-sodium hydroxide in
methanol (v/v) in a screw-capped test tube (15 x 1.5
cm). After being heated in a boiling water bath for 15
min the solution was acidified to pH 1 with 5.5 N-
sulfuric acid in water (v/v). The free fatty acids were
25 extracted using 3 x 10 ml portions of heptane. The
organic extract was washed with water, dried over Na₂SO₄
anhydrous and the filtered solvent was removed under
vacuum with a rotary evaporator.

The effect of this procedure on CLA formation was
30 investigated. When linoleic acid (2.0 mg) was subjected
to the procedure, no CLA was detected as determined by UV
absorbance at 235 nm using a Beckman DU-50
Spectrophotometer and by the semi-preparatory reversed-
phase HPLC as described below. This finding indicates
35 that CLA was not formed as a result of extraction/
saponification by our methods.

HPLC separation. Separation and purification of CLA by HPLC were performed at room temperature using a Beckman Model 421A microcontroller system fitted with two solvent delivery modules (Beckman model 110A) and a dual channel UV detector (Micromeritics 788 model; Norcross, GA). Eluent was monitored at 235 or 245 nm. Peak areas were recorded with a Spectra Physics 4270 integrator. CLA in the sample was separated on a semi-preparatory reversed-phase column (Ultrasphere-ODS, 5 μ m, 250 x 10 mm, i.d., Beckman) with a gradient mobile phase (acetonitrile and water) as previously reported (Ha et al., supra). The purification of individual isomers or alkali-isomerized linoleic acid was performed on a normal-phase semi-preparatory column (Ultrasil-NH₂, 5 μ m, 250 mm X 10 mm, i.d., Beckman) using a gradient system. The starting mobile phase (99:1 hexane:ethanol, v/v) and flow rate (1.0 ml/min) were maintained for 20 min and then both hexane proportion and flow rate were linearly increased to 100% and 4.0 ml/min, respectively, over 20 min. These conditions were held for an additional 40 min and then returned to the starting conditions for 10 min. The system was re-equilibrated at least 10 min prior to the next injection.

Preparation of CLA derivatives. CLA methyl esters were prepared from the free acid form using boron trifluoride-methanol. The PTAD derivative of CLA methyl ester was prepared according to the method of Young, et al., Anal. Chem (1987) 59, 1954-1957 after methylation of CLA.

GC analysis. GC analysis of CLA methyl ester or CLA methyl ester derivatized with PTAD was carried out with a gas chromatograph fitted with a flame ionization detector (FID) and an integrator. The column used was a fused silica capillary column: 60 m x 0.32 mm, i.d. with a 0.25 μ m film thickness. GC conditions consisted of an on-column injection system with helium as the carrier gas

at 2 ml/min linear gas flow rate. Temperatures were programmed as follows: oven, 50-200°C at 20°C/min and held for 60 min; and injector, 50-200°C at 100°C/min after injection. Detector temperature was 250°C. The
5 volume injected ranged from 1.0 to 2.0)l, containing 0.5 to 5.0)g CLA/))l.

GC-MS analysis. GC-MS analysis was conducted with an automated mass spectrometer system using a splitless injector and a Supercowax-10 capillary column (60 m x
10 0.32 mm, i.d., 2.5)m film thickness). The column temperature was programmed as specified in the GC analysis section. Electronic impact (EI) ionization and chemical ionization (CI) were carried out at 70 ev and 100°C as a source temperature. The CI spectrum was
15 obtained using isobutane as a reagent gas. For the analysis of PTAD derivatives of CLA methyl esters, a DB-5 glass capillary column (30 m x 0.32 mm, i.d., 1.0 um film thickness) was used with a temperature program; 60-250°C at 10°C/min after one min holding at 60°C. The data were
20 analyzed by a system equipped with a CDC-CMD disk driver.

GC-FT/IR analysis. GC-FT/IR analysis was performed with a Nicolet model 60S FT/IR using a capillary column (60 m x 0.32 mm, i.d., 0.25)m film thickness). GC conditions were the same as those for GC analysis.

25 CLA quantification. Quantification of individual CLA isomers in a sample was based on the internal standard method. To obtain correction factors (CF) for individual CLA isomers, a reference mixture consisting of known amounts of the isomers plus PBA was subjected to the
30 extraction procedure and reversed-phase HPLC analysis. Pooled CLA and PBA peaks from the HPLC were chromatographed on a capillary GC column (Supercowax-10) after methylation. The CF for the individual isomers was calculated as follows: $CF = (Area_{IS}/Weight_{IS}) \times$

(Weight_x/Area_x), where the subscript IS refers to internal standard and the subscript x refers to a given CLA isomer. Using the CF_x, the amount of each CLA isomer in the sample was calculated by the following equation:

5 ppm_x = [(Area_x/Area_{IS}) x Weight (mg)_{IS}]/sample (gm)] x CF_x x 1000.

Results

GC/HPLC separation. A reversed-phase semi-preparatory HPLC of the sample effected separation of CLA from the other saturated or unsaturated fatty acids. Subsequent GC analysis of the methylated CLA peak indicated that 7 components (peaks 1 through 7) eluted after linoleic acid; these peaks exhibited identical retention times to those of the methylated alkali-isomerized linoleic acid components. Two approaches were employed to identify the isomers: 1) determination of ECL values of CLA isomers; and 2) spectral analyses of the CLA sample or alkali-isomerized linoleic acid containing unidentified peaks for which standards are not available or are difficult to obtain.

10
15
20

Determination of ECL. A chromatogram showed that the GC profile of the methyl esters of saturated fatty acid standards (C16:0, C17:0, C18:0, C20:0 and C22:0) plus that of a methylated CLA sample. ECL values of CLA methyl ester isomers were determined by plotting carbon numbers vs retention times on semilog paper. The ECL values of CLA methyl esters ranged from 19.49 for peak 1 to 20.01 for peak 7. The ECL values and elution orders have been reported for some of the geometrical/positional isomers of CLA methyl esters separated on a 100-m glass capillary Silar 10C column. The difference in ECL remained constant within 0.01 - 0.03 unit for the isomers tested by both columns. The correlation coefficient (r value) was 0.9995 for the available standards on the two columns. The column that we used is only slightly less

25
30
35

polar than a Silar 10C column. Therefore, the ECL data are comparable.

5 A CLA methyl ester standard was co-chromatographed with a methylated CLA sample containing unidentified peaks. For those peaks that co-chromatographed with a standard CLA methyl ester, identity is set as such. This relationship was then used to determine the identities of the remaining unknown peaks.

10 According to the ECL relationship and co-chromatographic results, peaks 1, 3, 5, 6 and 7 were identified as methylesters of c9, t11- and/or t9, c11-, t10, c12-, c9, c11-, c10,c12- and t9,t11- and/or t10,t12-octadecadienoates, respectively.

15 Identification of peaks 2 and 4. The methyl esters of alkali-isomerized linoleic acid or sample CLA were subjected to GC-MS and GC-FT/IR analyses. EI-MS data of peaks 2 and 4 were identical, yielding fragment (M/e) 67 (base peak), 294 (M^+), 74, 59 and 262; hence, these isomers could not be distinguished by this method.

20 Since under normal EI ionization conditions double bonds can migrate prior to fragmentation making it difficult to determine their original positions, others have used CI-MS to identify the double bond position in hydrocarbon chains and fatty acids. CI-MS data of CLA methyl esters of peaks 2 and 4 exhibited a molecular weight of 294 ($M^+ + 1$: 295, 100%). Typical M/e for peak 2 were 113 (3%), 213 (5%), 139 (1%) and 239 (12%), and for peak 4 were 99 (5%), 227 (8%), 125 (1%) and 253 (13%).
25 Cleavage between carbons 10 and 11, and 12 and 13 double bond numbered from carboxyl group yielded M/e 113 and 213, respectively. Cleavage between 8-9 and 14-15 single bond carbons produced M/e 139 and 239, respectively.
30 Hence, peak 2 is identified as a 10,12-positional isomer of methyl octadecadienoate. Peak 4 had M/e 99 derived from cleavage of the double bond between carbons 11 and
35 12, M/e 227 from cleavage of the double bond between carbons 13 and 14, M/e 125 derived from single bond

cleavage between carbons 9 and 10, and M/e 253 from single bond cleavage between carbons 15 and 16, indicating that this compound is an 11,13-positional isomer.

5 Additionally, peaks 1 and 5 contained M/e 127, 199, 153 and 225, indicating 9,11-isomers. Similarly, peaks 3 and 6 contained M/e 113, 139, 213 and 239 and were identified as 10, 12-isomers. Peak 7 contained M/e of both 9,11- and 10,12-isomers.

10 The CLA sample (methyl esters) derivatized with PTAD was chromatographed on a Supercowax-10 column. All peaks of CLA methyl esters disappeared from the GC profile compared with those of underivatized CLA methyl esters. Since PTAD is electrophilic and therefore only reacts with a conjugated double-bond system in hydrocarbon
15 chains or fatty acids via Diels-Alder reaction, peaks 1 through 7 were identified as CLA positional isomers. The PTAD derivatives of CLA methyl esters (molecular weight of 467) that had relatively high polarity were not eluted under these conditions. The Supercowax-10 (polar) column
20 was changed to a DB-5 (non-polar) column to elute the derivatives. A different elution pattern was obtained from that observed with the former column. This method will not identify positional isomers, but it confirms the presence of the conjugated double-bond in the sample and
25 also indicates the location of CLA methyl esters in the GC chromatogram from the Supercowax-10 column.

The major differences in GC-FT/IR spectra of peaks 2 and 4 were at the 1000 - 800 cm^{-1} range. Sharp absorption at 990 and 945 cm^{-1} (peak 2) and broad
30 absorption at 990 cm^{-1} (peak 4) were observed, indicating that peak 2 is a cis, trans-isomer and peak 4 a cis,cis-isomer.

Based on the results of spectral analyses, co-chromatography and ECL values, peaks 1 through 7 were
35 identified as methyl esters of c9,t11- and/or t9,c11-, c10,t12-, t10,c12-, c11,c13-, c9,c11-, c10,c12- and t9,t11- and/or t10,t12-octadecadienoates, respectively.

Application. The newly developed GC/HPLC method to analyze individual CLA isomers was applied to the dairy products and beef. A CLA sample containing PBA was purified on the semi-preparatory reversed-phase column. PBA was eluted at 6.2 min and CLA at 40 min. The two pooled peaks were dried over Na_2SO_4 anhydrous and the organic solvent was evaporated under nitrogen. After methylation of the residue, it was analyzed by GC. PBA was co-eluted with some impurities on the HPLC column, but these impurities did not interfere with CLA isomer resolutions on the GC column.

Quantification of peaks 2 (c10,t12-isomer) and 4 (c11,c13-isomer) was based on an assumption that CF values of these isomers are equal to the average CF values of the remaining five CLA isomers: 0.17, c9,t11-isomer (peak 1); 0.16, t10,c12-isomer (peak 3); 0.17, c9,c11-isomer (peak 5); 0.16, c10,c12-isomer (peak 6); and 0.17, t9,t11- or t10,t12-isomer (peak 7). Total CLA content among cheeses ranged from 169.3 ppm (Blue cheese) to 1815 ppm (CHEESE WHIZ®). Of the aged natural cheeses, Parmesan cheese aged more than 10 months contained the highest (622.3 ppm) and Blue cheese aged over 100 days contained the lowest amounts of CLA (169.3 ppm), suggesting a positive relationship between the aging period and CLA content. In general, processed cheese contained more CLA than natural cheese. It is interesting to note that raw and pasteurized whole milk both contained similar amounts of CLA. Grilled ground beef contained 994 ppm of total CLA, while uncooked ground beef contained 561.7 ppm. Fat content ranged from 4.0% (pasteurized whole milk) to 35.5% (cream cheese). Based on total fat, the CLA content ranged from 549.8 ppm (Blue cheese) to 9289.7 ppm (grilled ground beef).

Of the individual isomers, t9,t11-/t10,t12-, c9, t11-/t9, c11- and t10,c12-octadecadienoic acids accounted for more than 89% of the total CLA in all measured samples. The t,t-isomers ranged from 49.8% (uncooked ground beef)

to 78.1% (cream cheese); however, in milk samples approximately 15% of the CLA was present as t,t-isomers. The remaining CLA isomers (c9,c11-, c10,c12-, c10,t12-, c11,c13) contributed less than 11% of the total CLA in the samples.

Origin of CLA. The origin of CLA in cheese and ground beef is not known. CLA formation may be attributed to 1) free-radical type oxidation of linoleic acid effected by aging, heat treatment and protein quality; and 2) isomerization of linoleic and linoleic acids in the rumen.

Aging processes modify the physio-chemical properties of cheese or beef to give typical characteristics. Examples include the oxidation of fats. Under anaerobic conditions this may occur during heating, where oxidation of linoleic acid in glycerides or phospholipids may be initiated to form an allyl radical. The radical would be stabilized through the formation of its resonance forms which require hydrogens to form a conjugated double-bond system. The hydrogens are attributed to proteins which, in turn, form protein radicals. These radicals may be neutralized by alpha-tocopherol in the lipophilic regions. It is known that when linoleic acid was oxidized by UV irradiation in the presence of albumin, 9, 11-conjugated linoleic acid is formed rather than oxidation products, suggesting the importance of protein as a hydrogen source. The importance of protein in CLA formation is also supported by our finding that lactalbumin- and lactoglobulin-enriched cheese contained significantly higher amounts of CLA than other cheeses that were not enriched. CHEESE WHIZ®, which is enriched with whey concentrate (Table I), contained twice as much CLA as the other processed cheeses. Whey protein contains relatively high levels of lactalbumin and lactoglobulin that could provide a hydrogen source.

CLA isomers that were isomerized from linoleic and linolenic acids in the rumen may contribute directly to the CLA content in cheese or meat. A significant amount of CLA was present in raw whole milk and pasteurized whole milk. A positive correlation has been observed between conjugated dienoic C18 fatty acids of milk with trans isomers and linoleic acid in the diet. These conjugated dienoic fatty acids are also present in butter (1-4.5%) and are directly related to the linolenic acid content in the diet of cows. During biohydrogenation of linoleic or linolenic acid by microorganisms in the rumen, cis-double bonds undergo an extensive isomerization. This may involve a shift in position along with the carbon chain (positional isomerization) or a change of geometrical configuration or both. Isomerization would be the rate controlling step and would determine the final concentration of CLA. In milk or ruminant animal tissues, the isomer ratio is effected by the microbial population in the rumen which, in turn, is influenced by the amount of linolenic acid and/or linolenic acid fed.

Formation of positional/geometrical isomers. The t9,t11- and t10,t12-isomers, and the c9,t11- and t9,c11-isomers could not be separately quantified in this study. However, if we assume that each of the t,t-isomers contributes equally to the total amount of peak 7, and that the total concentration of the t9,c11-isomer co-eluted with c9,t11-isomer in peak 1 is equal to the concentration of the c10,t12-isomer of peak 2, then the following conclusion may be drawn: 1), the molar concentration of the 9,11-positional isomer is identical to the molar concentration of the 10,12-positional isomer; 2), the concentrations of c9,t11- and t11,c12-isomers are equal; 3), there are four major isomers (t9,t11-, c9,t11-, t10,t12- and t10,c12-) and five minor isomers (c9,c11- t9,c11-, c10,c12-, c10,t12- and c11,c13-); and

4), there is a relatively higher concentration (61-78.1% of total CLA in cheese) of t,t-isomers. These conclusions might be explained by the isomerization of linoleic acid and/or linoleic acid geometrical isomers (c9,t12-, t9,t12- and t9,c12-isomers).

5 Linoleic acid radical containing an unpaired electron on the methylene interrupted carbon (carbon number 11) would stabilize to form resonances via a proton shift. The shift occurs in either the carboxyl group or hydrocarbon terminal direction to make a conjugated double-bond. The probability of the formation of 9,11- or 10,12-isomer is equal due to the distance of the carboxyl group from the double-bond system and/or to the esterified carboxyl group in the glycerides or phospholipids.

15 Theoretically, 8 possible geometric isomers of 9,11- and 10,12-octadecadienoic acid (c9,c11; c9,t11; t9,c11; t9,t11; c10,c12; c10,t12; t10,c12 and t10,t12) would form from the isomerization of c9,c12-octadecadienoic acid. As a result of the isomerization, only four isomers (c9,c11; c9,t11; t10,c12; and c10,c12) would be expected. However, of the four isomers, c9,t11- and t10,c12- isomers are predominantly produced during the autoxidation or alkali-isomerization of c9,c12-linoleic acid due to the co-planar characteristics of 5 carbon atoms around a conjugated double-bond and spatial conflict of the resonance radical. The remaining two c,c-isomers are minor contributors.

25 The relatively higher distribution of the t,t-isomers of 9,11- or 10,12-octadecadienoic acid in the sample apparently resulted from the further stabilization of c9,t11- or t10,c12-geometric isomers, which is thermodynamically preferred, during an extended processing time or long aging period. Additionally the t,t-isomer of 9,11- or 10,12-octadecadienoic acid that was predominantly formed during the isomerization of linoleic acid geometrical isomers (t9,t12-, c9,t12- and t9,c12-octadecadienoic acid) may influence the final ratio of

the isomers or the final CLA content in the samples. These linoleic acid geometrical isomers accounted for up to 11% of the milk fat and for 13.6% of the linoleic acid content in beef. In the case of milk, we observed only
 5 15% of the total CLA content was the t,t-isomers far lower than for the other samples. The reason for this may be that rumen microorganisms preferentially isomerized c9,c12-octadecadienoic acid to c9,t11-octadecadienoic acid. Subsequent pasteurization of the
 10 milk was not sufficient to effect the stabilization of c,t-isomers to the t,t-isomeric forms.

Linoleic acid geometrical isomers also influence the distribution of minor contributors (c,c-isomers of 9,11- and 10,12-, t9,c11- and c11,t12-octadecadienoic acids).
 15 The 11,13-isomer might be produced as a minor product from c9,c12-octadecadienoic acid or from its isomeric forms during processing.

The methods combining reverse-phase HPLC with GC may be used to determine CLA and its isomeric forms in food
 20 products. Such information should be of interest given the anticarcinogenic properties of CLA under certain conditions in animal experiments, the fact that CLA has been isolated from human milk, serum, bile and duodenal juice and our discovery that it is an effective
 25 antioxidant and mold growth inhibitor.

Table I. Products studied

Sample	Descriptive Characteristics
1. Parmesan cheese (Grated)	Part-skim milk, cheese culture, enzymes, aged over 10 months
30 2. Cheddar cheese (American)	Whole milk, cheese culture, enzymes, aged over 6 months
3. Romano cheese (Grated)	Part-skim cow milk, cheese culture, enzymes, aged over 5 months
35 4. Blue cheese	Whole milk, cheese culture, enzymes, aged over 100 days

- | | | | |
|----|-----|----------------------------------|--|
| | 5. | Past. proc. cheese
(American) | American cheese, milkfat |
| | 6. | Cream cheese | Pasteurized milk, cream cheese
culture |
| 5 | 7. | Cheese spread
(Roka blue) | Pasteurized milk, milkfat,
cream cheese |
| | 8. | Cheese Whiz®
(Kraft) | Cheddar cheese, low moisture
part-skim Mozzarella cheese, whey
concentrate |
| 10 | 9. | Milk
Pasteurized whole | Cow's milk |
| | | Non-pasteurized whole | Cow's milk |
| | 10. | Ground beef | uncooked or grilled |

15 CLA is naturally present in cheese but is esterified in triglycerides. To be effective in inhibiting mold growth, we believe that the free acid or salt form of CLA must be present.

20 It will be readily apparent to those skilled in the art that a number of modifications or changes may be made without departing from the spirit and scope of the present invention. Therefore, the invention is only to be limited by the claims.

CLAIMS:

The embodiments of the invention in which an exclusive property or privilege is claimed are the following:

1. A method of preserving a product by preventing oxidation, quenching singlet oxygen or inhibiting mold growth in the product which comprises adding to said product a safe and effective amount of an active form of
5 CLA.

2. A method of preserving a product by preventing oxidation, quenching singlet oxygen, or inhibiting mold growth in the product which comprises adding to said product an effective amount of a member selected from a
5 9,11-octadecadienoic acid; 10,12-octadecadienoic acid; active isomers and esters thereof; non-toxic salts thereof; other active chemical derivatives thereof and mixtures of the foregoing.

3. A method of preserving a product by preventing oxidation, quenching singlet oxygen or inhibiting mold growth in the product which comprises adding to said product sufficient linoleic acid and a protein capable of
5 transforming the linoleic acid to form in situ an effective amount of a member selected from 9,11-octadecadienoic acid; 10,12-octadecadienoic acid; active isomers and esters thereof; and mixtures of the foregoing.

4. A method of preparing a preservative with antioxidant, singlet oxygen quenching and mold growth inhibiting properties which comprises reacting linoleic acid and a protein capable of the transforming linoleic acid to a safe and effective amount of a compound selected from 9,11-octadecadienoic acid, 10,12-octadecadienoic acid, active isomers thereof, and mixtures of the foregoing.

5. A safe and effective preservative having antioxidant, singlet oxygen quenching and mold growth inhibiting properties for use in natural foods comprising a member selected from the group consisting essentially of 9,11-octadecadienoic acid; 10,12-octadecadienoic acid; active isomers thereof; non-toxic salt thereof; active thereof; active chemical derivatives; and, mixtures of the foregoing which have been prepared from linoleic acid and a protein both from natural sources.

6. A non-toxic salt of a member selected from 9,11-octadecadienoic acid; 10, 12-octadecadienoic acid and active isomers thereof.

7. The potassium salt of a member selected from the group consisting of 9,11-octadecadienoic acid; 10,12-octadecadienoic acid; active isomers thereof.

8. The sodium salt of a member selected from the group consisting of 9,11-octadecadienoic acid; 10,12-octadecadienoic acid; active isomers thereof.

9. The use of CLA as a preservative in a product.

10. The use of CLA as a preservative in a natural product.

1/4

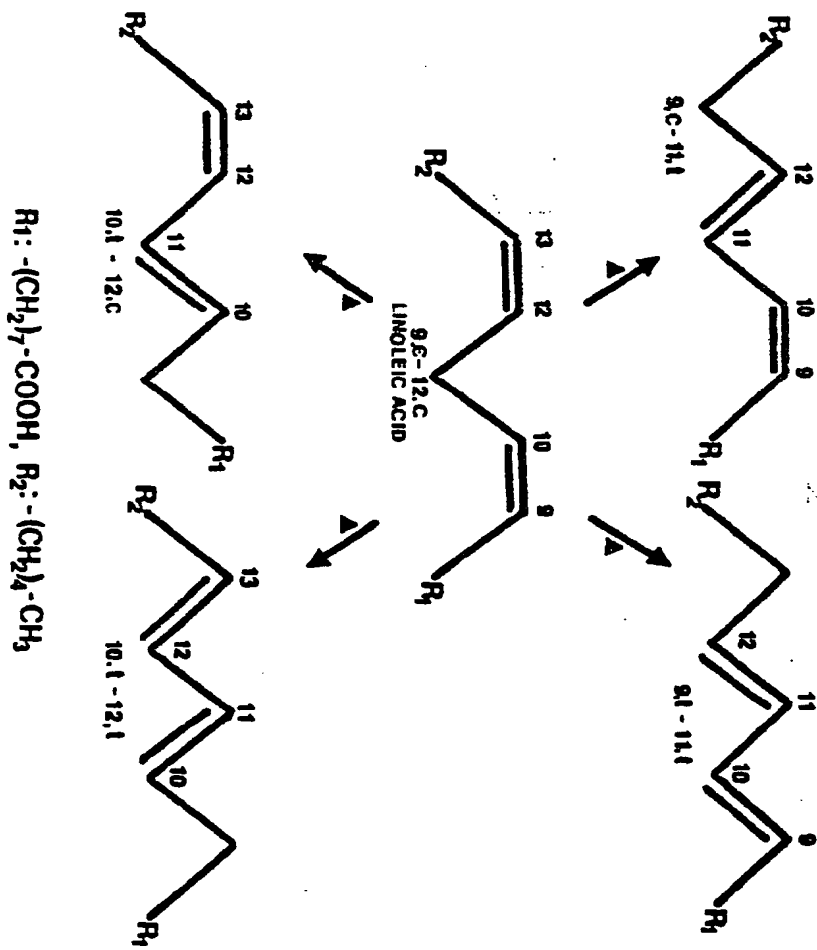


Fig. 1

2/4

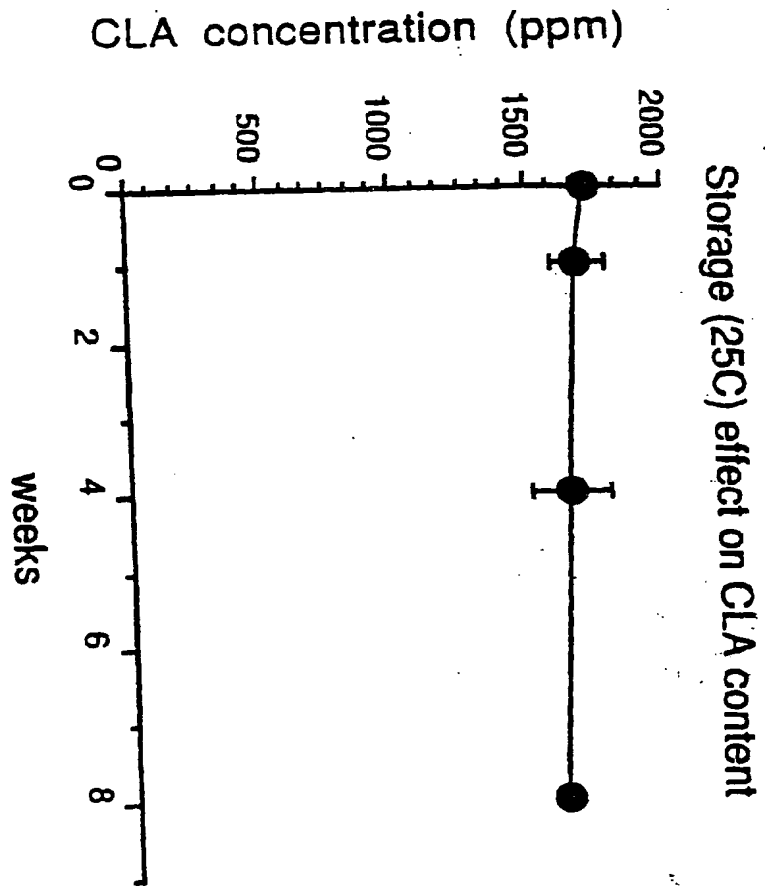
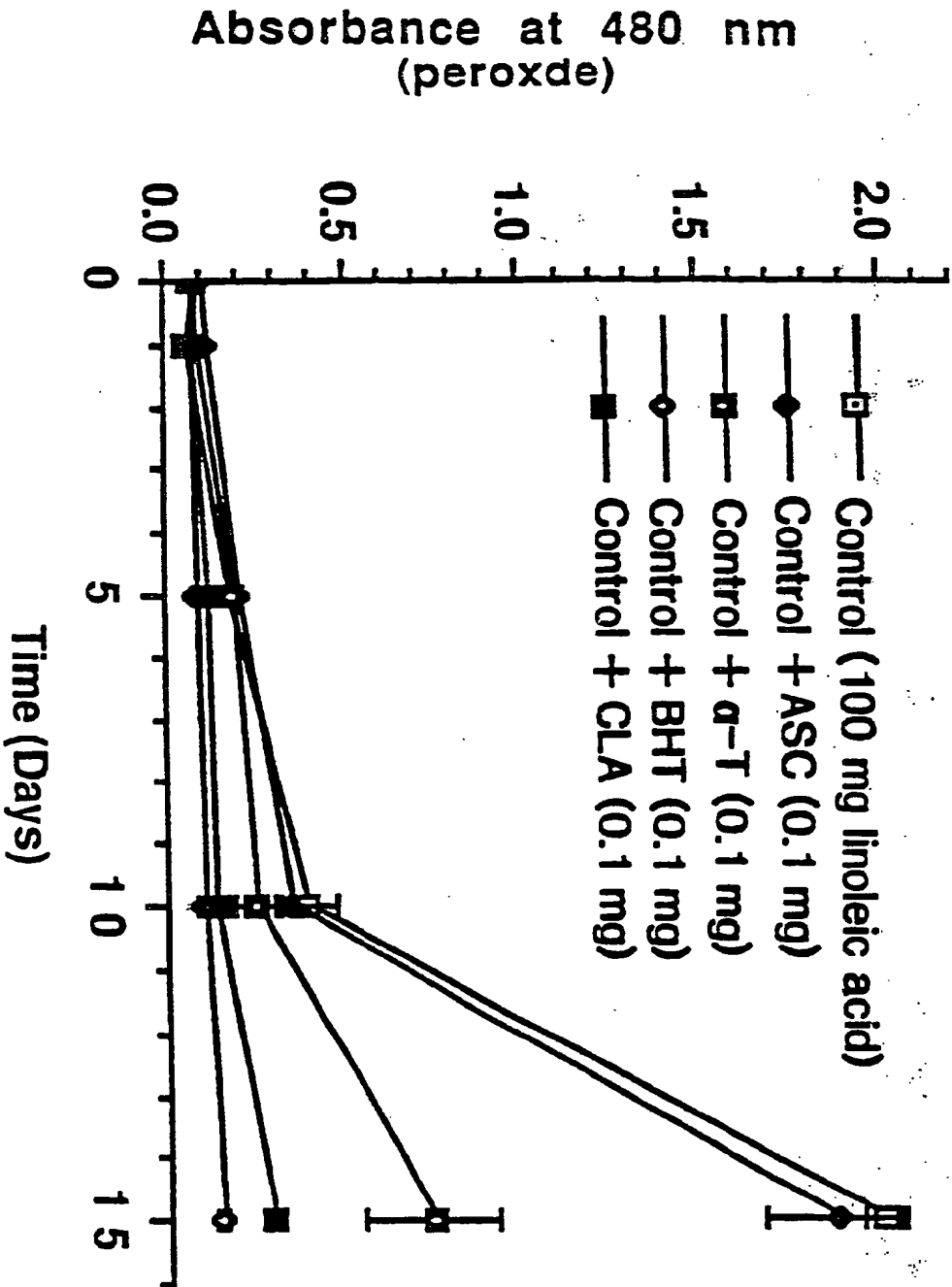


Fig. 2

3/4

Inhibitory effect of CLA on LA oxidation

Fig. 3



4/4

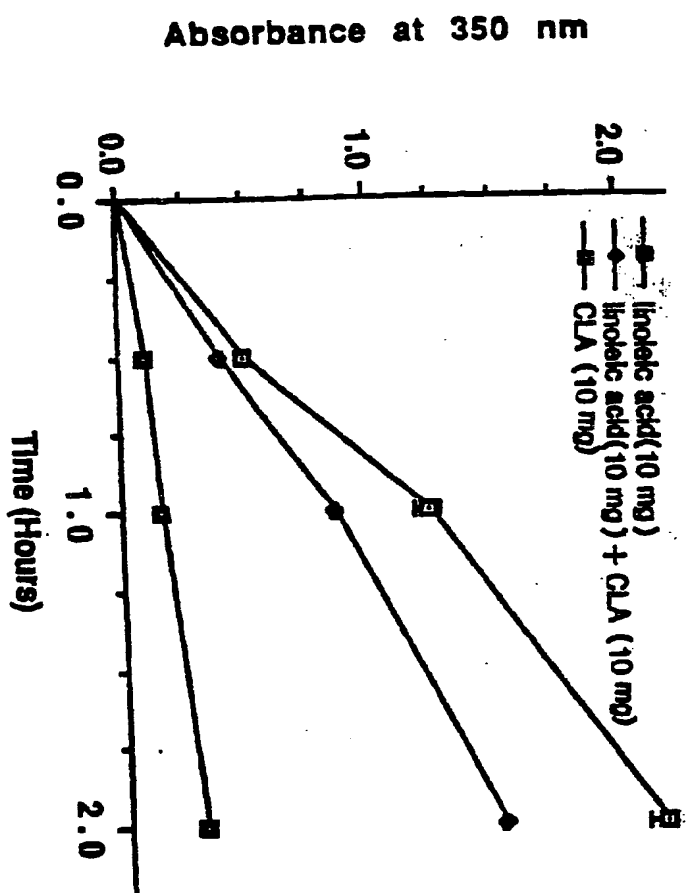


Fig. 4

INTERNATIONAL SEARCH REPORT

International Application No. **PCT/US90/00630**

I. CLASSIFICATION OF SUBJECT MATTER (if several classification symbols apply, indicate all) ⁶		
According to International Patent Classification (IPC) or to both National Classification and IPC		
IPC 5 - A23L 3/3508 A23L 3/3517 U.S.CL. - 514/549; 514/558		
II. FIELDS SEARCHED		
Minimum Documentation Searched ⁷		
Classification System	Classification Symbols	
U.S.CL.	514/549; 514/558; 562/598; 426/541; 426/581; 426/582; 426/583; 426/585; 426/586; 426/601; 426/610; 426/656	
Documentation Searched other than Minimum Documentation to the extent that such Documents are included in the Fields Searched ⁸		
III. DOCUMENTS CONSIDERED TO BE RELEVANT ⁹		
Category [*]	Citation of Document, ¹¹ with indication, where appropriate, of the relevant passages ¹²	Relevant to Claim No. ¹³
X Y	<u>Journal of Agricultural and Food Chemistry</u> , Volume 37, No. 1, issued 1987, (American Chemical Society), Y.L. Ha, et al., "Newly Recognized Anticarcinogenic Fatty Acids: Identification and Quantification in Natural and Processed Cheeses", pages 75-81, See abstract.	5 6-8
X Y	<u>Science News</u> , Volume B5, No. 6, issued 1989, February. J. Raloff, "cheese source of dietary anticancer agent", see page 87.	1-5 6-10
X Y	<u>Carcinogenesis</u> , Volume 8, No.12, issued 1987, December (Oxford, England), Y.L.Ha, et al., "Anticarcinogens from fried ground beef: heat-altered derivatives of linoleic acid", pages 1881-1887, see page 1885.	5 6-8
Y	A. Streitwieser, Jr., et al., <u>Introduction to Organic Chemistry</u> , Second Edition, published 1981, Macmillan Publishing Co., Inc. (New York), see pages 504-505.	6-8
<p>[*] Special categories of cited documents: ¹⁰</p> <p>"A" document defining the general state of the art which is not considered to be of particular relevance</p> <p>"E" earlier document but published on or after the international filing date</p> <p>"L" document which may throw doubts on priority claim(s) or which is cited to establish the publication date of another citation or other special reason (as specified)</p> <p>"O" document referring to an oral disclosure, use, exhibition or other means</p> <p>"P" document published prior to the international filing date but later than the priority date claimed</p> <p>"T" later document published after the international filing date or priority date and not in conflict with the application but cited to understand the principle or theory underlying the invention</p> <p>"X" document of particular relevance; the claimed invention cannot be considered novel or cannot be considered to involve an inventive step</p> <p>"Y" document of particular relevance; the claimed invention cannot be considered to involve an inventive step when the document is combined with one or more other such documents, such combination being obvious to a person skilled in the art.</p> <p>"&" document member of the same patent family</p>		
IV. CERTIFICATION		
Date of the Actual Completion of the International Search		Date of Mailing of this International Search Report
05 APRIL 1990		03 MAY 1990
International Searching Authority		Signature of Authorized Officer
ISA/US		<i>Wendy Catchpole</i> WENDY CATCHPOLE

FURTHER INFORMATION CONTINUED FROM THE SECOND SHEET

X

Chemical Abstracts, Volume 80, No. 9, issued 1974, March (Columbus, Ohio, U.S.A.), A. Hiyosh, et al., "Preventing oxidation of oils and fats of food", see page 255, column 1, abstract no. 46644t, Japanese Patent 73 14,942, 11 May 1973.

4

V. OBSERVATIONS WHERE CERTAIN CLAIMS WERE FOUND UNSEARCHABLE¹

This international search report has not been established in respect of certain claims under Article 17(2) (a) for the following reasons:

1. Claim numbers _____ because they relate to subject matter ¹² not required to be searched by this Authority, namely:
2. Claim numbers _____ because they relate to parts of the international application that do not comply with the prescribed requirements to such an extent that no meaningful international search can be carried out ¹³, specifically:
3. Claim numbers _____ because they are dependent claims not drafted in accordance with the second and third sentences of PCT Rule 6.4(a).

VI. OBSERVATIONS WHERE UNITY OF INVENTION IS LACKING²

This International Searching Authority found multiple inventions in this international application as follows:

1. As all required additional search fees were timely paid by the applicant, this international search report covers all searchable claims of the international application.
2. As only some of the required additional search fees were timely paid by the applicant, this international search report covers only those claims of the international application for which fees were paid, specifically claims:
3. No required additional search fees were timely paid by the applicant. Consequently, this international search report is restricted to the invention first mentioned in the claims; it is covered by claim numbers:
4. As all searchable claims could be searched without effort justifying an additional fee, the International Searching Authority did not invite payment of any additional fee.

Remark on Protest

- The additional search fees were accompanied by applicant's protest.
- No protest accompanied the payment of additional search fees.